



**A simple keystroke could help a child with autism**



A Web Project of Kennedy Krieger Institute  
Sponsored by Autism Speaks



**Kennedy Krieger Institute**  
Department of Medical Informatics  
3825 Greenspring Avenue / Painter Building, 1st Floor  
Baltimore, Maryland 21211

tel 443-923-4140 [www.IANproject.org](http://www.IANproject.org) 443-923-4145 fax



Linking the autism community and researchers

# What is IAN?

IAN, the Interactive Autism Network, is an innovative online project designed to accelerate the pace of autism research by linking researchers and families. Anyone impacted by an Autism Spectrum Disorder (ASD) can become part of IAN's online community to stay informed about autism research, provide feedback, and make their voices heard. In addition,



families of children with an ASD can share information in a secure online setting and become part of the nation's largest online research effort. As a result, researchers will obtain valuable data, explain

findings, and collaborate with families and one another. This dynamic exchange could lead to new discoveries about causes, diagnosis, treatments, and a possible cure for this puzzling group of disorders.

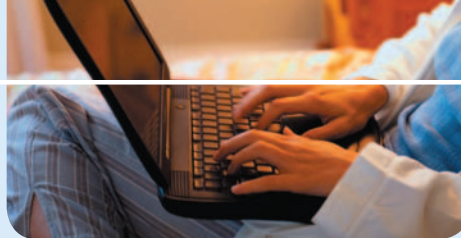
## Help advance autism research in two ways:

**IAN Community** — Families, researchers, and anyone impacted by ASDs can take part in the IAN Community – a comprehensive online library and meeting place focused solely on ASD research. Visitors can learn about the latest research, become more informed consumers of research, and join in a worldwide collaboration of people dedicated to finding answers.

**IAN Research** — Parents of a child with an ASD can help by providing critical information only they possess: knowledge about their affected child's history, behaviors, and treatments. Without sharing your identity, this data will be shared with qualified researchers throughout the country. The goal is to gather the nation's largest collection of autism-related data — an accomplishment that could lead to new, important breakthroughs.

In addition, the IAN database will notify families about other local and national autism research projects for which they qualify.

Become part of the solution visit [www.IANproject.org](http://www.IANproject.org)



# IAN Community

## Understand Autism Research

The IAN Community is an online library and welcoming meeting place where visitors can learn about the latest autism research.

Our goal is to help visitors:

- Keep up with the latest autism research findings, news, and events
- Better understand the research process
- Understand the value of participating in autism research
- Influence the direction of future autism research

## What resources are available?

The IAN Community features:

- Articles about diverse research topics – from genetics to education — written by leading researchers in the ASD field
- Discussions focused on research topics
- Up-to-the-minute reports on research findings from IAN Research

## Who can participate?

Anyone who is impacted by ASDs can participate. The IAN Community is a worldwide collaboration that brings families, friends, and individuals with ASDs together with researchers, educators, therapists, and other autism professionals to understand this complex disorder.

## Why participate?

By sharing their experience and knowledge, families will help ASD researchers in their search for causes, treatments, and possibly a cure.

IAN offers an exciting new way to become part of the solution.

Visit the IAN Community at [www.IANproject.org](http://www.IANproject.org)

# IAN Research

## Participate in autism research without leaving home!

Via secure online questionnaires that can be filled out from the comfort of home, parents can participate in ASD-related research, sharing valuable information about their child's diagnosis, behavior, family, environment, and services received. Researchers throughout the country will use that information to learn about the effect and interaction of factors such as genetics, environment, and treatment on the well-being of children. IAN Research will also serve as a research registry, helping families stay informed about other autism research projects for which they qualify.

## Who can participate?

To participate in IAN Research, families must have a child who:

1. Lives in the USA
2. Is less than 18 years of age, and
3. Has been told by a professional that they have any of the following:

- Autism Spectrum Disorder (ASD)
- Autism
- Asperger Syndrome
- Autistic Disorder
- Pervasive Developmental Disorder (PDD)
- Pervasive Developmental Disorder – Not Otherwise Specified (PDD-NOS)
- Childhood Disintegrative Disorder (CDD)

Biological or adoptive parents of children who meet the above criteria are invited to register for the project at [www.IANproject.org](http://www.IANproject.org).

Visit IAN Research at [www.IANproject.org](http://www.IANproject.org)

Principal Investigator: Paul Law, MD, MPH  
Contact: [ResearchTeam@IANproject.org](mailto:ResearchTeam@IANproject.org)  
JHMI IRB# NA\_00002750



Approved March 9, 2007